

THE CURRENT

July/August 2023



STORM EDITION

TALQUIN
ELECTRIC COOPERATIVE, INC.
WATER & WASTEWATER, INC.

"The Current"
July/August 2023
Vol. MMXIX No. 24
USPS #356-710

"The Current" is the official newsletter of Talquin Electric Cooperative, Inc., published bi-monthly as an informational and educational service to the Members of the Cooperative. Periodical postage paid at Tallahassee, Florida.

SUBSCRIPTION RATE

Cooperative Member \$2.80 per year.
Talquin Electric Cooperative, Inc. is an equal opportunity provider and employer.

EDITORIAL OFFICE

P.O. Box 1679
1640 West Jefferson Street
Quincy, Florida 32353-1679

Tracy Bensley, General Manager
Lori Pilz, Director of Member Services
Samantha Jessee, Communications and Outreach Manager
Sabrina Johnson, Communications and Outreach Specialist

PRINTED BY:

Graphic Press Corporation, Tallahassee, Florida

POSTMASTER

In using Form 3579, please give key letter and mail to "The Current," P.O. Box 1679, Quincy, Florida 32353-1679.

OFFICERS

Joseph Alexander
President
Home: 850-627-2704
507 Deerwood Circle
Quincy, Florida 32352

Clifford S. Bristol
Vice President
Cell: 850-661-1733
15333 N.W. CR 12
Bristol, Florida 32321

Billy VanLandingham
Secretary/Treasurer
Cell: 850-545-5604
Home: 850-442-6252
519 Telogia Creek Road
Quincy, Florida 32351

TRUSTEES

Sam Fenn
Home: 850-576-5072
3539 Lakeview Drive
Tallahassee, Florida 32310

David Miller
Home: 850-926-5869 or Cell: 850-567-5405
227 Buck Miller Road
Crawfordville, Florida 32327

Jason O'Steen
Cell: 850-510-1900
9850 Sydney Lane
Tallahassee, Florida 32311

Carla Pararo
Home: 850-688-6809
1050 Winfield Forest Drive
Tallahassee, Florida 32317

Dr. Gregory Winter
Home: 850-545-9618
260 River Bluff Drive
Havana, Florida 32333

David L. Wright
Home: 850-875-2928
1194 Solomon Dairy Road
Quincy, Florida 32352

Trustee bios and pictures are located on the website.

The Talquin Electric Cooperative, Inc. and Talquin Water & Wastewater, Inc. Boards regularly schedule their workshops on the 1st Monday of each month and meetings on the 3rd Wednesday of each month at the Headquarters' Office in Quincy, FL at 6:30 PM. If necessary, an Executive Session may be held in conjunction with any regular meeting, special meeting, or workshop. Notice of any changes will be listed at <https://www.talquinelectric.com/about/board-meetings-workshops/>.

Weathering the Storm Together



Joe Alexander
President



Tracy Bensley
General Manager

While Florida's sunshine and pristine beaches continue to attract tourists and locals seeking an escape from reality, we remain attentive as the summer months also mark the arrival of hurricane season. Rest assured, Talquin is fully prepared to face any storm that comes our way!

While the official start of the Atlantic hurricane season is June 1st, our dedicated team of employees at Talquin works throughout the year to ensure we are ready for storm season. Starting each January, we evaluate and update our Emergency Response Plan, or ERP, to ensure that every aspect and employee assignment is up to date and ready to be activated at a moment's notice. Our employees are given specific "storm assignment roles" that differ from their day-to-day responsibilities. Once the ERP is updated and before hurricane season begins, we conduct a storm exercise training session to review the changes, understand the assignments, and work through realistic scenarios. Additionally, some designated employees participate in specialized training to review their storm assignments and role responsibilities.

In addition to preparing within the cooperative, we believe it is essential to help educate Talquin Members about hurricane preparation and safety. Talquin also actively participates in community hurricane preparedness events to help Members with preparation in advance should a storm affect our area. By gathering necessary supplies and creating an emergency supply kit before hurricane season arrives, you can minimize stress and focus on keeping your family safe when a warning is issued.

In the event that a storm threatens our service area, we activate "Storm Mode." During this time, each employee shifts from their regular tasks to their designated storm assignments from the ERP. Our employees work long 16-hour days until power restoration has been achieved. We also work with Florida's Electric Cooperative Association, which assists with providing Mutual Aid from other cooperatives, bringing in outside assistance as quickly as possible. These crews can come from various locations, ranging from Florida to Texas and even as far as Indiana. During Hurricane Michael, our company grew from 200 employees to 800 overnight! As we carry out storm assignments and work to restore power swiftly and safely, we will keep the Membership informed through social media and any other available means at the time.

While we cannot alter the path of a storm, we do everything within our power to ensure we are fully prepared in case our community is impacted. We strongly encourage all Talquin Members to have a plan for hurricane season and prepare in advance. If a storm hits Talquin's four-county service territory, we are ready and committed to managing the power restoration effort for Members. Are you prepared as well?

Be sure to stay connected by following us on Facebook, Instagram, and Twitter for the latest updates and information this storm season. View the Hurricane Preparedness guide and other great resources on our website at www.talquinelectric.com. Together, we will weather any storm that comes our way.

Medically Essential Service Account

Do you or someone in your household have electronic medical equipment? Be prepared and storm ready! The Medically Essential Service (MES) accounts program assists Talquin in identifying locations for service restoration as soon as possible when there are service disruptions. In the event of a major storm or hurricane, Talquin will contact MES accounts and provide notification that service could potentially be without power for an unknown period of time. Advance notice will allow Members time to prepare should they need to relocate prior to a weather event. This service does not guarantee uninterrupted electric service at any location, including disconnect for non-payment. Eligible Members can complete the form with a physician's signature to be placed on this service. Forms must be renewed annually. For more information, please visit our website at talquinelectric.com.



Summertime Irrigation Do's and Don'ts

The Florida heat can take a toll on your lawn and gardens during the summer months from June through August. Luckily, our average annual precipitation is approximately 52 inches, with most rainfall occurring during this time. If there is a need to water your lawn, the best time for irrigation is in the early morning hours. Applying moderate amounts of water creates healthy, drought and stress-tolerant lawns. Overwatering promotes weed growth, disease, and fungus. To prevent damage and promote healthy lawns year-round, avoid these six most common irrigation errors:

- Broken or misdirected sprinklers
- Obstructed sprinkler application
- Mixed sprinkler types
- Uneven watering rates
- Improperly spaced sprinklers
- Incorrect irrigation schedules

For more information on proper irrigation and lawn care during the summertime, visit <http://edis.ifas.ufl.edu/publication/LH025>.

BE PREPARED BEFORE A STORM STRIKES

In the event of a power outage, be prepared by keeping the following items in an easy-to-find emergency supply kit.

WATER

Three-day supply, one gallon per person per day.

TOOLS

Flashlight, extra batteries, manual can opener, battery-powered or hand-crank radio, NOAA Weather Radio with tone alert.

FIRST AID KIT AND PRESCRIPTIONS

First aid supplies, hand sanitizer and at least one week's supply of prescriptions and medications for the family.



Learn more at
www.ready.gov

Keep Food Safe

Before, During, and After a Power Outage

Unfortunately, power outages do occur from time to time. It's important to know how to keep your food safe during an outage. Use these tips from USDA to help minimize food loss and reduce your risk of illness.

Before power outage



Keep refrigerator at **40° or below**. Freeze items like fresh meat and poultry that you won't use immediately. Keep freezer set to **0° or below**. Group frozen foods to help items stay colder longer.



If you anticipate an extended power outage, buy dry or block ice to keep the fridge and/or freezer cold.

During power outage

Keep the refrigerator and freezer doors closed!

If the doors stay closed during the length of the outage:



A full freezer will hold its temperature for **48 hours**.



A refrigerator will keep food safe for **four hours**.

After power outage



Check the temperature inside your refrigerator and/or freezer.



If the temperatures are safe, the food should be safe to eat.

Foods that should be thrown out after an extended power outage:



Source: USDA

Hurricane Preparedness Resources

If you have special needs (due to age, disability, etc.) and may require assistance during a storm, or if you need shelter updates, contact your local County Emergency Management for information regarding services they provide. Also, check to see if your county has a mass notification system so you can stay prepared and informed.

GADSDEN COUNTY

(850) 875-8650

www.gadsdencountyfl.gov/departments/emergency_management

WAKULLA COUNTY

(850) 745-7200

www.wcso.org/emergency-management

LIBERTY COUNTY

(850) 643-2339

www.libertycountyflm.com

LEON COUNTY

(850) 606-3700

www2.leoncountyfl.gov/ei/

Other Hurricane Preparedness Resources:

The Florida Division of Emergency Management

The National Hurricane Center

Federal Emergency Management Agency (FEMA)

Ready (From the Department of Homeland Security)

American Red Cross

The Salvation Army

floridadisaster.org

nhc.noaa.gov

fema.gov

ready.gov

redcross.org/local/florida/north-florida

salvationarmyflorida.org/tallahassee

Reporting Outages

Reporting an outage is fast and convenient with Talquin's Mobile App and outage text alerts! To report an outage through the Talquin Mobile App*, simply open the app and click "Report Outage". Register in advance on our website to receive text alerts on your mobile device during an outage. Additionally, outages can be reported on the Talquin website and by calling 1-888-802-1832 (live operator), or 1-866-899-4832 (automated). All options are free of charge!

*Download the app from Google Play Store or iOS App Store. Then register the account using information found on a billing statement.

Let's Stay Connected this Hurricane Season!



Mobile App:
Talquin Electric Cooperative, Inc.



Full Service Drive-Thru:
All Talquin offices operate full service from the drive-thru.



Text Message:
Text #Outage to 85700
(must register on Talquin's website for this service)



Mail:
P.O. Box 1679
Quincy, FL 32353



Email:
memberfeedback@talquinelectric.com



Phone:
(850) 627-7651



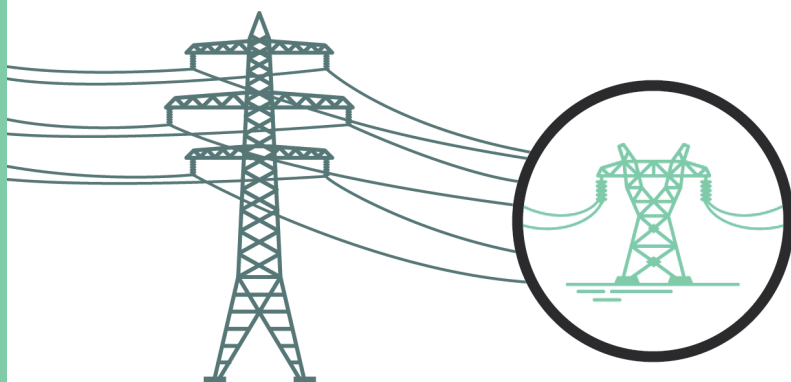
Website:
www.TalquinElectric.com



Social Media:
Search "Talquin Electric Cooperative" on Facebook, Instagram, and Twitter.

The Steps to Restoring Power

When a major outage occurs, our crews restore service to the greatest number of people in the shortest time possible – until everyone has power.



1. High-Voltage Transmission Lines

These lines carry large amounts of electricity. They rarely fail but must be repaired first.



2. Distribution Substations

Crews inspect substations, which can serve hundreds or thousands of people.



3. Main Distribution Lines

Main lines serve essential facilities like hospitals and larger communities.



4. Individual Homes and Businesses

After main line repairs are complete, we repair lines that serve individual homes and businesses.

Safety Tips for Before, During, and After the Storm

Storm season is in full swing. Many summer storms have the potential to produce strong winds and heavy rain—they can happen anytime, anywhere.

As adults, we understand the importance of storm safety, but younger children and teens may not realize the dangers storms pose. That's why it's so important to talk to your family and have a storm plan in place. Here are several tips you can share with your loved ones.



Before the Storm

- Talk to your family about what to do in the event of a severe storm. Point out the safest location to shelter, like a small, interior, windowless room on the lowest level of your home. Discuss the dangers of severe thunderstorms; lightning can strike 10 miles outside of a storm. Remember: when you hear the thunder roar, head indoors.
- Make a storm kit. It doesn't have to be elaborate—having a few items on hand is better than nothing at all. Try to include items like water, non-perishable foods, a manual can opener, a First-Aid kit, flashlights and extra batteries, prescriptions, baby supplies, and pet supplies. Keep all the items in one place for easy access if the power goes out. Talquin's Hurricane Preparedness Guide (talquinelectric.com) has lots of great information and resources to help you prepare.

During the Storm

- Pay attention to local weather alerts—either on the TV, your smartphone, or weather radio—and understand the types of alerts. A thunderstorm or hurricane watch means these events are possible and you should be prepared; a warning means a thunderstorm or hurricane is in your area and it's time to take action.
- The most reliable sources for local forecasts and hazards include the National Hurricane Center (www.nhc.noaa.gov) and the National Weather Service (www.weather.gov).
- If you find yourself in a severe thunderstorm or hurricane, stay indoors and away from windows.
- If you're driving during a severe storm, do not try to outrun it. Pull over until it is safe to drive again or wait for it to pass.

After the Storm

- If the power is out, conserve your phone battery as much as possible, limiting calls and texts for emergencies or for letting others know you are safe.
- Stay off the roads if trees, power lines, or utility poles are down. Lines and equipment could still be energized, posing life-threatening risks to anyone who gets too close.
- Wear appropriate gear if you're cleaning up storm debris on your property. Thick-soled shoes, long pants, and work gloves will help protect you from sharp or dangerous debris left behind.

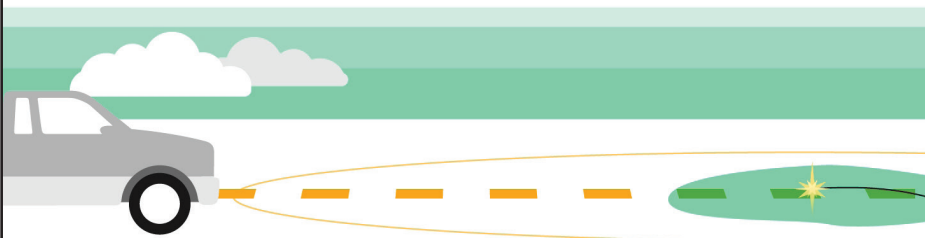
Summer is a time for many fun-filled activities, but the season can also bring severe, dangerous weather. Talk to your loved ones about storm safety so that everyone is prepared and knows exactly what to do when a storm strikes.

Downed and Dangerous

If you see a downed power line, always assume it is energized and dangerous. Avoid going near it or anything in contact with the power line.



Downed power lines can energize the ground up to **35 ft.** away – so keep your distance.



Never drive over a downed line or through water that is touching the line.



If you see a downed line, notify the local authorities immediately.



Never try to move a downed power line, even if you think the line is deenergized or if you're using a non-conductive item – this will not prevent injury or death!

Source: [ESFI.org](https://www.esfi.org)

STAY SAFE – DO NOT GO NEAR DOWNED LINES

Always avoid downed power lines—the wire could be energized, which could be deadly for those nearby. Quickly report downed lines to Talquin.

Report downed lines by calling:

911

850-627-7651

(during business hours)

1-888-802-1832

(Outage, Live Operator)



TRADING POST MISCELLANEOUS

Selling **Serta Perfect Sleeper California King**. Brand new, in plastic. Asking \$1,200 or best offer, depending on pick-up. Call Jon-Michael: 850-556-9825

Antique oak wardrobe & bed \$200 for both. Antique oak ice box \$100. 50 AMP RV surge protector \$200. Text for photos 850-556-7886

Ostermeat grinder \$25, Rival food slicer \$20, Turkey gobbler & hen decoy \$30, Pier One dishes-black \$25, car battery AAA premium \$35. Call 850-878-7336

Blade RC 330 S RC helicopter, brand new, never flown. \$700 invested, will take \$500; 3 batteries, 2 chargers, everything comes with it. Randy 850-518-9815

Rain shower showerhead \$25; Queen bed frame \$75; Simmons Beautyrest mattress \$75; box spring \$50. Entire bed bought together \$150. 850-385-2505

Nice **12' John Boat** with 35 lb. thrust trolling motor. \$400.00 850-445-9036

Ten designed metal window bars in very good condition. Cost is \$25 each; call 850-567-3633

Sofa and loveseat, light brown and plush. 4 decorative print pillows with each couch. Will send pictures. \$375 for set. 850-510-7527

Free to your church, a school or to you: **Story**

& Clark piano in good condition. Bench, sheet music and teaching instructions. 850-273-0672, text only

For Sale – Elvis collection, 850-856-5818

FREE: 43 VHS tapes near Midway. 7 prerecorded, others recordable. Call 850-539-1915. If no answer, please leave a message mentioning tapes. Come get them all!

Radio Shack am/fm transistor radio \$20, medical oxygen tank \$5, 2 waterproof washable bed pad/wings \$10, 2 washable wheelchair cushion covers, \$5 each. Text 850-661-5553

Yamaha P-115 digital weighted 88 key piano. In great condition. \$300. 850-322-2999

John Deere Lawn Tractor, 54 in. cut, needs some carb work, \$300 OBO, 850-997-0473

Brand new GE small room air conditioner (250 sq. ft.), 110 volt. In box, never opened. \$200 OBO. 850-926-9992, leave message

Maytag washer, 1 year old, excellent condition. \$375 OBO. Call 850-273-0688

4 height adjustable office chairs with wheels. Brand new, boxed (assembly required). Originally, \$145 apiece, will sell all for \$350. Call 850-339-2704

Generac 15000 Portable Generator, commercial/residential, industrial. Electric start, 22500 surge watts, 10 hours continuous run time, 16-gallon

TRADING POST GUIDELINES

In order to continue to provide The Trading Post in every issue of The Current, we ask Members to adhere to the guidelines listed below when submitting an ad. If an ad does not meet the criteria, it will not be published. Talquin provides "The Trading Post" ads for the convenience of our Members. Talquin is not responsible for the content of the ads. Talquin does not endorse or warrant the products or services offered in the ads. There is no cost to place an ad in The Trading Post.

- **Members may submit one ad per issue (six times a year)**
- **Ads must be twenty-five words or less**
- **Must be typed or printed legibly in ink**
- **No registered businesses may run an ad**
- **No changes after ad submission**
- **No event promotion of any kind**
- **No firearm sales of any kind**

Mail ads to: "The Current", Talquin Electric Cooperative, PO Box 1679, Quincy, FL 32352-1679 or email to: tradingpost@talquinelectric.com

fuel tank: \$2000.00.
dawsond2@yahoo.com

Briggs & Stratton generator, 6250 watts, used once; Whirlpool upright, like new freezer; tools and other items in excellent condition. Only serious inquiries 850-627-3926

Amana washer & dryer \$100 - \$125 good shape; GE refrigerator, good shape, stainless door, black sides \$200. 850-570-8500

SERVICES

CARETAKER for your loved one – experienced at personal care giving for Parkinson's, Alzheimer's, etc. Years of experience and references. Available Monday – Friday. 850-386-3562

Compassionate, Christian caregiver available. Personal care, meals, meds, laundry, light housekeeping. Reliable, reasonable rates. CPR and First Aid certified. 25+ years' experience. Call 850-575-8906

Tile, flooring, screened in porches and complete bathroom and kitchen renovation, painting, drywall. JD TREMODELING 850-740-8141

30 years' experience capable of planting, pruning, mulching, weeding. \$35 per hour plus additional cost if gas powered tool used and gas and travel. 850-900-7703

CEMETARY/ BURIAL

Adjacent cemetery plots – 2 plots in Meadwood Memorial Park Whispering Pines Section. \$5,000 each, both for \$9,000. Contact: nick66464@gmail.com

Cemetery lot in Chapel Garden, Culley's Meadow Wood Memorial Park, Timberlane Road. Located near mausoleums on west side. \$2200.00. Current value \$6295.00. Call 850-566-2856

One burial plot @ Tallahassee Memory Gardens \$1295.00. I will pay the \$50.00 to change the name, call or text to 850-300-9879. Preferably text message.

2 cemetery plots with vaults @ Tallahassee Memory Gardens \$4000.00 + \$50.00 to change name 850-567-2369, leave message

AUTO & IMPLEMENT

1986 Vintage Chevrolet El Camino. Black/silver. Nice condition and runs great. \$12,000. Call or text 850-321-2663

2008 Mercury Grand Marquis LS, silver/blue, 250,000 miles, runs but needs some work; \$2300 OBO, 850-997-0473

REAL ESTATE

3 Rooms for rent available now; Fully furnished rooms with private bath. Between \$560 - \$595 per month, 1 year lease. Calls only please 850-284-4892.

19.24 rural acres; Liberty County, Florida; six minutes to the Apalachicola River; one hour to Panama City Beaches; small stream on property; \$68,800. Contact 850-228-7916.

LOOKING FOR

Wanting to buy: Lionel, American Flyer, Marx, HO or N gauge. Any amount or condition. Call 850-893-8718

Looking for pre 1980 sports memorabilia – old sports photos, baseball/football/basketball cards, autographs. Please text or call 850-508-8072

MOVE OVER – IT'S THE LAW

When approaching an authorized emergency, sanitation, or utility service vehicle on the side of the road, do not forget to do the following:

- Move out of the lane closest to their vehicle.
- If you cannot move over, slow speed to 20 miles per hour under the posted speed limit.

This is especially important to remember during storm season when there are more trucks out there restoring power. Thanks for helping to keep our crews safe!



#MoveOverFL

GRILLED TO PERFECTION

Grilled Mahi Mahi with Summer Squash Salsa

Recipe from Food Network Magazine: (www.foodnetwork.com)

Yield: 6-8 Servings Total Time: 1 Hour 45 Minutes

Ingredients:

- | | |
|--|---|
| 1 yellow zucchini or yellow squash, thinly sliced | 1 ½ teaspoons ground cumin |
| 2 tomatoes, diced | 1 ½ teaspoons ground coriander |
| ½ red onion, finely chopped | 8 skinless Mahi Mahi filets (about 6 ounces each) |
| ½ jalapeno pepper, minced (remove seeds for less heat) | Extra-virgin olive oil, for brushing |
| 2 limes, juiced | Freshly ground pepper & Kosher salt (to taste) |
| ¼ cup packed fresh cilantro, chopped | |



Instructions:

1. Combine the zucchini, tomatoes, red onion, jalapeno, lime juice, and half of the cilantro in a bowl. Mix and set aside 1 hour.
2. Preheat a grill to medium-high. Mix the cumin and coriander in a small bowl (spice mixture).
3. Brush the fish all over with olive oil, then rub with the spice mixture and season generously with salt and pepper.
4. Grill the fish until it is well marked and releases easily from the grill, about 4 minutes. Flip the fish and continue cooking until firm, 2 to 4 more minutes, depending on thickness.
5. Transfer to a platter. Stir the remaining cilantro into the vegetable mixture and season with salt. Spoon over fish and serve.

Cheesy Bacon Ranch Potato Foil Packs

Recipe from Betty Crocker: (www.bettycrocker.com)

Yield: 6 servings Prep Time: 15 Minutes Cook Time: 30 Minutes Total Time: 45 Minutes

Ingredients:

- 1 ½ pounds small Yukon gold potatoes, halved
- 4 teaspoons oil
- 2 tablespoons ranch dip mix
- 1 jalapeno, seeded, finely chopped
- 4 slices cooked bacon, coarsely chopped
- 1 cup shredded Cheddar cheese



Instructions:

1. Preheat a grill to medium-high heat. In a medium bowl, add the cut potatoes and drizzle with oil; sprinkle with ranch dip mix, add the jalapeno, and stir until evenly coated.
2. Cut 2 (18x12-inch) sheets of heavy-duty foil and spray with cooking spray.
3. Place an equal amount of mixture on the center of each sheet of foil. Evenly sprinkle with bacon. Bring up 2 sides of foil so the edges meet. Seal edges, making a tight 1/2-inch fold; fold again, allowing space for heat circulation and expansion. Fold other sides to seal. Place the packs on the grill over medium heat. Cover the grill and cook for 12 minutes. Rotate packs 1/2 turn and cook 12 to 14 minutes longer or until potatoes are tender.
4. Remove packs from the grill and cut a large X across the top of each pack. Carefully fold back the foil, and sprinkle potatoes with cheese. If desired, garnish with sliced jalapeno.

SUBMIT YOUR RECIPES

If you have some tasty recipes that you would like to share, submit them to us at TradingPost@talquinelectric.com, drop them off at any of our Member Services offices, or mail to us at PO Box 1679, Quincy FL 32353.

HELP SAVE A LIFE AND JOIN
TALQUIN AND ONEBLOOD
FOR OUR COMMUNITY

BLOOD DRIVES!

Each successful donor will receive
an eGift card, OneBlood t-shirt, and
wellness check-up, including, blood
pressure, temperature, iron count,
pulse, and cholesterol screening!

Appointments are encouraged!
Please visit oneblood.org/donate-now/
to view hours and sign up now!



UPCOMING DRIVES AT OUR MEMBER SERVICES LOCATIONS:

Quincy

Monday,
July 17, 2023

11:00 AM - 4:30 PM

1607 West
Jefferson Street

Crawfordville

Wednesday,
July 19, 2023

9:30 AM - 12:30 PM

681 Wakulla-
Arran Road

Lake Jackson

Wednesday,
July 19, 2023

11:00 AM - 2:00 PM

4808
Portal Drive



Midtown Reader Kidtown

Saturday, July 22, 2023 | 10:00 AM - 12:00 PM

Midtown Reader & the Piebrary

1123 Thomasville Rd, Tallahassee, FL, 32303

Please join us at Kidtown Readers for Story & Craft Hour - every Saturday from 11:00 am to Noon. There are always exciting stories and fun things to make...and sometimes there are surprises! Open to children of all ages!



TOGETHERNESS FOUNDATION INC.
PRESENTS

July 29th 11am-3pm

BACK 2 SCHOOL Backpack Giveaway

JUST A FEW THINGS TO EXPECT
Fire truck demonstration
Face painting
Canvas Painting
Food Vendors

404-834-4849

Tom Brown Park
501 Easterwood Dr
Tallahassee FL 32311

*Call 404-834-4849 to request material in accessible format, information on access for persons with disabilities, or a sign language interpreter (7 days in advance).

Back 2 School Backpack Giveaway

Saturday, July 29, 2023

11:00 AM - 3:00 PM

Tom Brown Park

501 Easterwood Drive

Tallahassee, FL 32311

The Togetherness Foundation is hosting their inaugural event for Back 2 School. A school supply giveaway with fire truck demonstrations, face painting, canvas painting, food vendors, and more!

2023 Back-to-School Sales Tax Holiday



Monday, July 24, 2023 -
Sunday, August 6, 2023

For more information and a list of qualifying items, please visit the Florida Department of Revenue's website:

<https://floridarevenue.com>

Water Tip of the Month

Consider using a rain barrel to save water. Rain barrels capture rainwater from a roof that can be used later for watering your lawn, garden, or indoor plants.



TALQUIN ELECTRIC COOPERATIVE, INC.

Office Locations

Headquarters

1640 W. Jefferson Street
Quincy, Florida 32351
(850) 627-7651

Quincy Member Services Office

1607 W. Jefferson Street
Quincy, Florida 32351
(850) 627-9666

Crawfordville Member Services Office

681 Wakulla Arran Road
Crawfordville, Florida 32327
(850) 926-7422

Hosford Member Services Office

20557 NE Cooperative Way
Hosford, Florida 32334
(850) 379-8679

Lake Jackson Member Services Office

4808 Portal Drive
Tallahassee, Florida 32303
(850) 562-0125

Bradfordville Member Services Office

6724 Thomasville Road
Tallahassee, Florida 32312
(850) 893-6853

Full Service Drive Thru Hours

Monday - Friday
8:30 AM - 5:00 PM,
Closed for Lunch 1:00 PM - 2:00 PM

Report an Outage

Via Mobile App

Download the Talquin mobile app on your iOS or Android device to report outages and receive updates. All with the click of a button!

Via Text

Text #OUTAGE to 85700
to report electric outages.

If not registered, visit our website at
www.talquinelectric.com

Via Phone

Automated System:
1-866-899-4832

Live Operator:
1-888-802-1832



Meet The Team!

Staking Engineers



Pictured above, left to right; Adam, Matt, Jake, Chuck, and Daniel. Not pictured; Nate.

Meet the team of professionals who keep the workflow of projects going here at Talquin. As part of the Engineering and Operations team, Staking Engineers are responsible for designing, staking, and providing cost estimates for system improvements and new electric services to Members.

We appreciate the dedication of this team and the knowledge they bring to Talquin!

HOLIDAY OFFICE CLOSURE

Talquin offices will be closed on Monday,
September 4, in observance of Labor Day.

We will reopen on Tuesday, September 5.

