

THE CURRENT

July/August 2021



STORM EDITION

TALQUIN
ELECTRIC COOPERATIVE, INC.
WATER & WASTEWATER, INC.

"The Current"
July/August 2021
Vol. MMXIX No. 16
USPS #356-710

"The Current" is the official newsletter of Talquin Electric Cooperative, Inc., published bi-monthly as an informational and educational service to the Members of the Cooperative. Periodical postage paid at Tallahassee, Florida.

SUBSCRIPTION RATE

Cooperative Member \$2.00 per year.
Talquin Electric Cooperative, Inc. is an equal opportunity provider and employer.

EDITORIAL OFFICE

P.O. Box 1679
1640 West Jefferson Street
Quincy, Florida 32353-1679

Tracy Bensley, General Manager
Dwight Callahan, Interim Director of Member Services
Megan Smith, Communications and Outreach/Co-Editor
Sara Khan, Communications and Outreach/Co-Editor

PRINTED BY:

Graphic Press Corporation, Tallahassee, Florida

POSTMASTER

In using Form 3579, please give key letter and mail to
"The Current," P.O. Box 1679, Quincy, Florida 32353-1679.

OFFICERS

Joseph Alexander
President
Home: 850-627-2704
507 Deerwood Circle
Quincy, Florida 32352

Dr. Clifford S. Bristol
Vice President
Cell: 850-661-1733
15333 N.W. CR 12
Bristol, Florida 32321

Billy VanLandingham
Secretary/Treasurer
Cell: 850-545-5604
Home: 850-442-6252
519 Telogia Creek Road
Quincy, Florida 32351

TRUSTEES

Sam Fenn
Home: 850-576-5072
3539 Lakeview Drive
Tallahassee, Florida 32310

David Miller
Home: 850-926-5869 or Cell: 850-567-5405
227 Buck Miller Road
Crawfordville, Florida 32327

Jason O'Steen
Cell: 850-510-1900
9850 Sydney Lane
Tallahassee, Florida 32311

Carla Pararo
Home: 850-688-6809
1050 Winfield Forest Drive
Tallahassee, Florida 32317

Gregory Winter
Home: 850-545-9618
260 River Bluff Drive
Havana, Florida 32333

Dr. David L. Wright
Home: 850-875-2928
1194 Solomon Dairy Road
Quincy, Florida 32352

Trustee bios and pictures are located on the website.

The Talquin Electric Cooperative, Inc. and Talquin Water & Wastewater, Inc. Boards regularly schedule their workshops on the 1st Monday of each month and meetings on the 3rd Wednesday of each month at the Headquarters' Office in Quincy, FL at 6:30 PM. If necessary, an Executive Session may be held in conjunction with any regular meeting, special meeting, or workshop. Notice of any changes will be listed at <https://www.talquinelectric.com/about/board-meetings-workshops/>.

We're Ready for Storm Season. Are You?



Joseph Alexander
President



Tracy Bensley
General Manager

Ah, summertime! Beach-filled days, barbeques, and oh yeah, hurricane season. After an extremely busy 2020 Atlantic hurricane season and the COVID-19 pandemic, it feels incredible to be getting back to the activities we love with our friends and family. But even though the world is finally getting back to normal, this is not the time to let our guard down.

The 2021 hurricane season is already off to a busy start, and it is only the middle of July. National Oceanic and Atmospheric Administration (NOAA) forecasters predict a 60% chance of an above-normal season and likely range of 13 to 20 named storms (winds of 39 mph or higher), of which six to ten could become hurricanes (winds of 74 mph or higher), including three to five major hurricanes (category 3, 4 or 5; with winds of 111 mph or higher). After experiencing only minor affects as Tropical Storm Claudette skirted by our area, there is no better time than now to prepare for hurricane season. Preparing early will allow you to avoid the rush at home supply stores and grocery stores, among other venues that tend to be

crowded when a hurricane watch or warning is issued.

"Although NOAA scientists don't expect this season to be as busy as last year, it only takes one storm to devastate a community," said Ben Friedman, acting NOAA administrator, and at Talquin, we could not agree more.

Hurricane Michael feels like an event from another lifetime, but it was just three years ago that Michael caused widespread damage in our area. We cannot change a storm's path, but we can do everything we can to ensure that we are as well prepared as possible if another storm impacts our community. We encourage our Members to have a plan for hurricane season and prepare early. If a storm hits Talquin's four-county service territory, we are ready and prepared to power on for our Members. Are you?

Tips to Prepare for Hurricane Season

Here are things that you can do to prepare for the 2021 storm season:

- Start to gather bottled water, non-perishable foods, first-aid supplies, clothing and bedding, and other emergency supplies (as outlined in other articles in this edition of The Current). Store items in easy-to-carry, water-proof containers that can be moved in the event of a storm emergency.
- Make a checklist of the things you will need in the event of an evacuation for you and your family, including pets, so that nothing essential will be left behind during a rushed departure.
- Cut down on wind hazards by removing any diseased and damaged limbs from trees.
- Limit flooding by making sure there is no debris in storm drains or clogged ditches. Report issues to the proper authorities.

Introducing COOPERATIVE REWARDS

Get paid to help your community save energy!

Talquin Electric Cooperative, Inc., (Talquin) is teaming up with Seminole Electric Cooperative (Seminole), our wholesale power provider, to launch a new smart thermostat pilot program called Cooperative Rewards. The program is designed to help save money on energy costs, contributes to the reliability of our grid, and helps the environment.

Controlling your thermostat reduces strain on the power grid and saves all of us money. During the Cooperative Rewards pilot program, Seminole will use smart thermostats to control energy usage in participating homes. Seminole will make brief adjustments to the thermostats enrolled in the Cooperative Rewards program during times of high demand or critical need. Participants must be year-round residents, agree to participate in cooling and heating adjustments, have a qualified smart thermostat, and be accepted into the program to be eligible for Cooperative Rewards. Qualified smart thermostats control air conditioning, heat pumps, or other electric heating sources, and are connected to the internet. Only the following brands qualify:



Honeywell
THE POWER OF CONNECTED

LUX

nest

Radio Thermostat
Radio Thermostat Company of America

sen | si

In most cases, you won't even notice the adjustments. Participants in the program will have ultimate control and can opt out of controls using their thermostat. However, participants opting out of more than 25% of the pilot program control minutes will not be eligible for some program incentives.

Talquin participants will receive a one-time \$25 bill credit (limit one per qualified electric account) after successfully enrolling in the program. In addition, if you stay enrolled and participate in at least 75% of event minutes, you may be entered for a chance to win a \$250 VISA/MasterCard gift card (one per household) at the conclusion of the program pilot in 2022.

While Cooperative Rewards offers direct savings for you, everyone wins when the result is a more efficient electric system. You'll save energy and money without sacrificing

comfort – and help Talquin keep electric costs down for all Members in our community.

You may be contacted by Talquin or your thermostat vendor in May to enroll in the Cooperative Rewards pilot program*. By participating in programs like Cooperative Rewards, we can contribute to the efficiency of the grid and help the environment.

If you have additional questions about the program, please visit our Frequently Asked Questions page at <https://www.seminole-electric.com/cooperative-rewards/> or contact us at support@cooperative-rewards.com.

* Cooperative Rewards is a pilot program that will run until April 2022. Talquin cannot guarantee that this program will continue after April 2022.

BE PREPARED BEFORE A STORM STRIKES

In the event of a power outage, be prepared by keeping the following items in an easy-to-find emergency supply kit.

WATER

Three-day supply, one gallon per person per day.

TOOLS

Flashlight, extra batteries, manual can opener, battery-powered or hand-crank radio, NOAA Weather Radio with tone alert.

FIRST AID KIT AND PRESCRIPTIONS

First aid supplies, hand sanitizer and at least one week's supply of prescriptions and medications for the family.



Learn more at
www.ready.gov

Keep Food Safe

Before, During, and After a Power Outage

Unfortunately, power outages do occur from time to time. It's important to know how to keep your food safe during an outage. Use these tips from USDA to help minimize food loss and reduce your risk of illness.

Before power outage



Keep refrigerator at **40° or below**. Freeze items like fresh meat and poultry that you won't use immediately. Keep freezer set to **0° or below**. Group frozen foods to help items stay colder longer.



If you anticipate an extended power outage, buy dry or block ice to keep the fridge and/or freezer cold.

During power outage

Keep the refrigerator and freezer doors closed!

If the doors stay closed during the length of the outage:



A full freezer will hold its temperature for **48 hours**.



A refrigerator will keep food safe for **four hours**.

After power outage

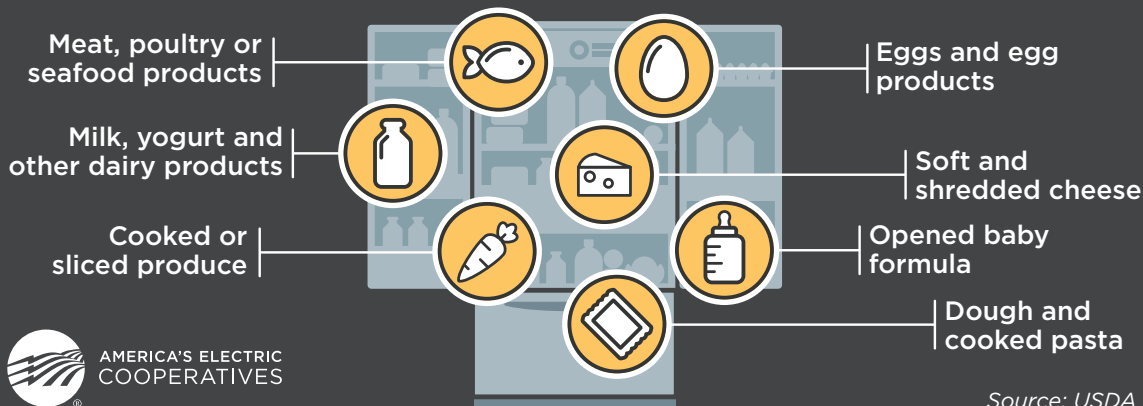


Check the temperature inside your refrigerator and/or freezer.



If the temperatures are safe, the food should be safe to eat.

Foods that should be thrown out after an extended power outage:



AMERICA'S ELECTRIC
COOPERATIVES

Source: USDA

TRADING POST

MISCELLANEOUS

Burial Plot: 1 grave space (Plot) located at Tallahassee Memory Gardens, vault, opening and closing for sale. Will negotiate. Please call Kim at 850-345-9228

Belgian Malinois: Free to good home with fenced yard or acreage. 3-year-old female purebred Belgian Malinois. Great family pet. Vaccinated. Not spayed or previously mated. 850-524-6235

Misc.: Miscellaneous: Who wants all these garage sale items? We cleaned out 2 attics and 3 closets. Take EVERYTHING for \$100 (worth much much more!). Text: 850-766-5670.

Burial Plots: Six plots in Woodville Cemetery, \$1,000 each. Text is best or call and leave a message, 850-228-9244

Misc.: FREE 20 1/2 ft. temporary power pole for mobile home, attached electrical box, plug and weather head; no ground rod. Old LP gas tank ideal for converting into BBQ grill. Call 850-926-7373 leave message.

Smoker: Texas strong and built to last. Can smoke up to 6 Boston Butts. Includes the remaining smoker wood. \$575.00 850-320-0496

Misc.: Aeromark hospital bed with rail and scoop mattress, like new \$500. Wheeled walker with brakes and seat, \$40. Potty chair, \$10. Text 850-274-5855.

Cats: Looking for forever, perfect match, loving homes for several amazing cats with delightful personalities. Also seeking a country setting for a wonderful family of 4 cats, the owner has health problems, he needs a good home for them. 850-879-5509

Barn Cats: Free Barn Cats, healthy, sterilized, and

vaccinated. 850-756-9776 or barncats850@yahoo.com

Misc.: Radio Shack weather radio, \$10; Synergy wheel chair cushion \$20; MinnKota 35 portable trolling motor, \$150; 10 pcs, 4 in. x 20 ft. PVC pipes, \$450; Big key landline phone, 30 ft. cord, no electricity to use, \$15; 10 dozen Medline adult diapers (120 total), fit 32" to 44" waist, sealed packages, \$4 a doz. Can meet in public place; 850-661-5553

Jet Pack and Lawn Edger: Jet pack MIFI 8800L, brand new, only used 5 months, \$199, OBO. Look: <https://tinyurl.com/5698y2pk>. Used wheeled CubCadet LE100 lawn edger, like new, 6 positions, 3 bevels, asking \$175; Look: <https://tinyurl.com/5eed2xs3> Email: bjspivey0603@gmail.com.

Burial Plots: Located at MeadowWood Memorial Park Garden Chapel 36-C #5 and #6 700 Timberlane Road, Tallahassee, FL 32312 \$5895 each, maintenance is included. Email: judy.peck123@gmail.com

Rabbits: Rabbits for sale. Please leave message. 850-562-2904

Burial Plots: Lots at MeadowWood Cemetery for sale. Make an offer. 850-878-9681.

Home Gym: Parabody Home Gym. Weight bench, leg curl, tree and all attachments. Excellent condition. 31 weight plates (50 lb to 2.5 lb). \$550. MCSR5050@outlook.com

Misc.: Bamboo folding room divider, \$2; women's golf clubs, \$100; golf bag, \$45; golf bag carrier/wheels, \$50; Two (2) Salton Lemonaders, \$20; Large dog crate w/divider, \$15; professional clothes steamer, \$20; 18 piece dinner set, \$20; 1 DVD player, \$20; Table lamp, \$12; 850-443-8015

Garage Sale items: Cherry China cabinet, antique dishes, microwave stand, receiving hitch, towing mirrors, antique lamps, cast iron sinks, electric

Trading Post Guidelines

In order to continue to provide The Trading Post in every issue of The Current, we ask Members to adhere to the guidelines listed below when submitting an ad. If an ad does not meet the criteria, it will not be published. Talquin provides "The Trading Post" ads for the convenience of our Members. Talquin is not responsible for the content of the ads. Talquin does not endorse or warrant the products or services offered in the ads. There is no cost to place an ad in The Trading Post.

- **Members may submit one ad per issue (six times a year)**
- **Ads must be twenty-five words or less**
- **Must be typed or printed legibly in ink**
- **No registered businesses may run an ad**
- **No changes after ad submission**

*Deadlines are the first day of the month preceding the month of publication (For example, June 1st is the deadline for the July/August edition.)

Mail ads to: "The Current", Talquin Electric Cooperative PO Box 1679, Quincy, FL 32352-1679 or email to: tradingpost@talquinelectric.com

tools, Ty Beanie Babies. 850-575-6013

Cemetery Plot: One single cemetery plot in Tallahassee Memory Gardens, \$1,295; 850-300-9879 or text message

China Set and Cabinet: Eight (8) serving 65-piece vintage china set "Roselyn" by Pope Gosser, \$300 or best offer; Large custom built corner cabinet and hutch, \$250; 850-544-5799

FURNITURE

Antique Desk: See pictures at https://www.dropbox.com/sh/4eff6ngr0djvcz0/AAA2UAY44_uZ_B46TklqaTzDa?dl=0 of old "Hotel Desk" from Colorado. Could be great kid's desk. \$40. In Crawfordville. Text to 719-252-3371.

Lift Chair: Gray leather lift chair in perfect condition. Price is negotiable. Pictures available upon request. Call 904-612-1753 and leave voicemail.

Misc.: 44 in. steer horns, mounted and polished, \$100; Genuine cowhide rug, ivory and tan, 80 in. by 68 in., \$95; Zebra accent end table, \$75; 850-878-7336, leave message

Misc.: Two drawer wood filing cabinet with some files; Broyhill twin headboard; Sauer TV/game/etc

REAL ESTATE

Rooms for Rent: 2 Rooms Available 7/1/2021! Fully furnished room and private bath in a beautiful home! Walk-in closet, Safetouch security, Wifi, utilities, oak Floors, linens, shared Kitchen! Rent

based on single occupancy. \$625 per month, \$50 app fee, \$400 security! 7-month lease. Additionally, furnished room and shared bath available! Safetouch security, Wifi, utilities, tile floors, linens, shared Kitchen! Rent based on single occupancy. \$535 per month, \$50 app fee, \$300 security! 7-month lease required. Calls Only Please 850-284-4892!

St. Marks River: River lot, St. Marks River, Natural Bridge area, .96 acres +/-, \$89,000; call 850-459-0913

TOOLS

Wood Lathe: Craftsmen wood lathe, 38 in. between centers, headstock, tailstock, centers faceplate tool, rest turning tools 110/220 convertible, \$400 or best offer, 850-566-5053

AQUATIC

Boat Trailer and Kayak: Boat trailer, single-axle, new tires/rims, light kit, \$300. Kayak, new, never used Pelican Trailblazer 100, single person sit-in with new paddle, \$265. Call (850) 566-9193 and leave message.

AUTO

2005 Harley Davidson: Road Glide Custom motorcycle, LED headlights, mustang seat, skull motif, 25K miles, \$6499; also available Custom Corbin motorcycle seat for Honda ST1100 for \$295; 850-997-0473

2005 Chevrolet Suburban 1500: For sale \$4,500. Call 850-574-0026 or 850-491-8741

1998 Kawasaki: 1500 Vulcan Classic, JKBVNaAe, \$3,500; 850-575-6013

SERVICES

Housekeeper: House cleaning services with 22 years' experience. Excellent references. Dependable. Free estimates. 850-321-4181.

Lawn Care: Will provide basic lawn service within the local area. Services can be provided one time, weekly, monthly, or annually. Reasonable rates. 850-933-1940 or JJ261LS@yahoo.com.

LOOKING FOR

Misc.: Used Toyota pick-up truck in good condition. Small pick-up truck in good condition. Riding mower in good condition. Older Hoover upright vacuum and tank vacuum. Full size to larger refrigerator AND freezer in Gadsden County. In good condition 1 TON EXTENDED/PASSENGER or CARGO VAN -older model. Used home/land security/lighting/gate equipment. Please call 850-879-5509.

Job opening: Crow's Corner is seeking a Store Team Member. This position provides you the opportunity to be cross-trained in all store functions and be part of a fast-paced work setting. Full-time availability is needed for this position. Email crowscorner.bax@gmail.com with your resume and interest in the position or call 850-544-1661 with any questions.

Thank a Lineman Specialty Plate

Florida drivers may now pre-order a specialty Thank a Lineman plate at www.thankalineworker.com or their county's tax collector office. Proceeds from the Thank a Lineman plate's fees will go to scholarships for students enrolling in the Electric Utility programs at Lake Sumpter State College. Pre-sale for the Thank a Lineman license plate runs through September 30, 2022.

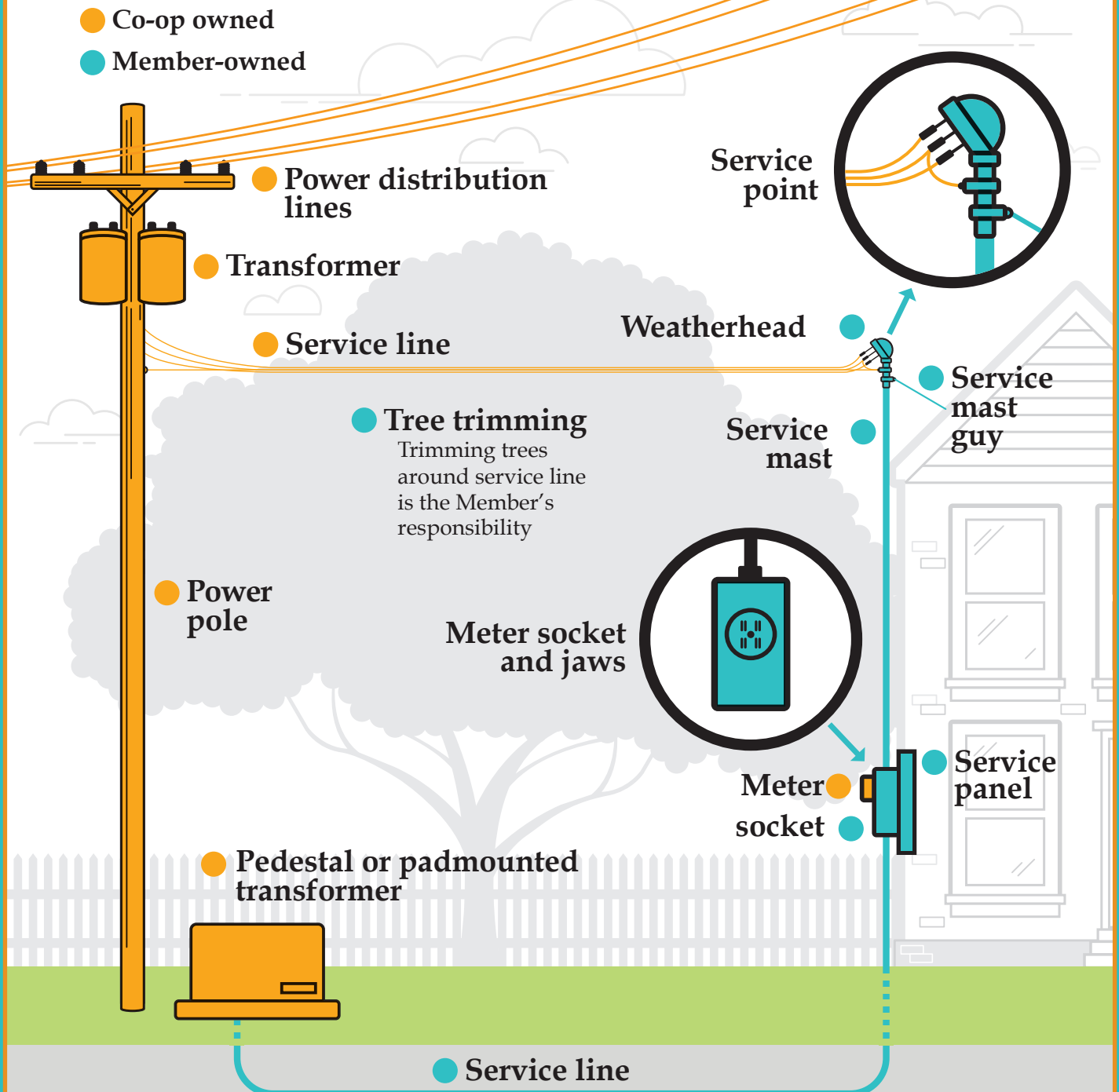
Currently, there are 988 vouchers secured. At least 3,000 vouchers must be secured by October 2022 for the specialty plate to be produced. If the minimal number is secured ahead of the deadline, the production of the plate can begin faster! Can you continue to help us reach this goal?



Who Owns What?

Electric Co-op Owned Equipment vs Member-Owned Equipment

This graphic depicts equipment owned by the co-op (in **gold**) and the Member (in **blue**). If a storm damages any equipment owned by the co-op, we are responsible for repairs. If a storm damages any Member-owned equipment, the Member is responsible for repairs. Members should hire a licensed electrician when making any repairs to Member-owned equipment.



Note: This graphic depicts overhead and underground service. Please be aware of which type of service you receive at your home or business.

Safe Generator Operation

Electric generators can keep your lights and appliances running during power outages—but they can also pose serious safety hazards if operated incorrectly. To ensure the safety of your family, neighbors, and Talquin employees, please read and follow the safety, maintenance, and testing instructions in the generator's operating manual.

- Use heavy-duty extension cords to connect electric appliances to the outlet on the generator.
- Check for damage to cords and make sure to watch for trip hazards.
- Do not overload the generator. It should be used only when necessary, and only to power essential equipment.
- Never run an electric generator inside a building. Always ensure proper ventilation and airflow around the generator. The carbon monoxide generated is deadly.
- Start the generator before connecting appliances.
- Never add fuel to a generator while it is running. Avoid spilling fuel on hot components.
- Always have a fully charged, approved fire extinguisher located near the generator.
- Keep children away from the generator at all times.

Plug appliances directly into the generator itself. Connecting the generator directly to your home's circuits or wiring must be performed by a qualified, licensed electrician who will install a transfer switch that will keep the generator from feeding power back into the distribution lines. If that happens, the power crews working to restore your electric service could be put at risk. Also, if your generator is still hooked up when the power is restored, your generator and your household electrical system may be damaged.

While supplies last, if you are interested in a GenerLink transfer switch, contact a Member Service office to arrange purchase and installation of a unit for your home.


- Purchase & Installation GenerLink™ 7.2kW/30 amp Switch: \$699.95 plus applicable taxes
 - 20 or 30 amp 4 prong twist lock, 20' connecting cord
- Purchase & Installation GenerLink™ 10kW/40 amp Switch: \$899.95 plus applicable taxes
 - 50 amp 4 prong twist lock, 20' connecting cord

**When Talquin supplies run out, you may purchase a GenerLink at your local hardware store. Talquin will charge \$125.00 to install a GenerLink purchased from an outside vendor.*

Residential Generators

WHAT TO KNOW BEFORE YOU BUY

INSTALLATION TYPE	PRICE	OPERATION ¹	CAPACITY	LENGTH OF OPERATION ²
permanent	expensive	automatic	whole house	can be indefinite
portable	more affordable	manual	typically partial ²	depends on fuel tank size



¹ Permanent generators start upon loss of grid power. They also exercise themselves automatically.
² Frequently powered: refrigerator, pumps (well, sump, septic), furnace, some lights, stove.
³ Permanent generators use propane or natural gas, portable use gasoline. Permanent models offer significantly longer operating times.

Image of portable generator provided by SafeElectricity.org



«MOVE OVER» «IT'S THE LAW»

When approaching an authorized emergency, sanitation, or utility service vehicle, do not forget to do the following:

- Move out of the lane closest to their vehicle.
- If you cannot move over, slow speed to 20 miles per hour under the posted speed limit.

This is especially important to remember during storm season when there are more trucks out there restoring power. Thanks for helping to keep our crews safe!

#MoveOverFL

Storm-Proof Recipes

Tuna and White Bean Lettuce Wraps

Recipe from Taste of Home

Ingredients:

1 can (12 ounces) light tuna in water, drained and flaked
1 can (15 ounces) cannellini beans, rinsed and drained
1/4 cup chopped red onion
2 tablespoons olive oil
1 tablespoon minced fresh parsley
1/8 teaspoon salt
1/8 teaspoon pepper
12 Bibb or Boston lettuce leaves (about 1 medium head)
1 medium ripe avocado, peeled and sliced



Directions:

In a small bowl, combine the first 7 ingredients; toss lightly to combine. Serve in lettuce leaves; top with avocado.

Colorful Corn 'n' Bean Salad

Recipe from Taste of Home

Ingredients:

1 can (15 ounces) black beans, rinsed and drained
1 jar (13 ounces) corn relish
1/2 cup canned kidney beans
1/2 cup quartered cherry tomatoes
1/2 cup chopped celery
1/4 cup chopped sweet orange pepper
1/4 cup sliced pimiento-stuffed olives
2 teaspoons minced fresh parsley



Directions:

In a large bowl, combine all ingredients. Cover and refrigerate until serving.

SUBMIT YOUR RECIPES

If you have some tasty recipes that you would like to share, submit them to us at TradingPost@talquinelectric.com, drop them off at any of our Member Service offices, or mail to us at PO Box 1679, Quincy FL 32353.

Hurricane Preparedness Resources

If you have special needs (due to age, disability, etc.) and may require assistance during a storm, or if you need shelter updates, contact your local County Emergency Management for information regarding services they provide. Also, check to see if your county has a mass notification system so you can stay prepared and informed.

GADSDEN COUNTY

(850) 875-8650

https://www.gadsdencountyfl.gov/departments/emergency_management

LIBERTY COUNTY

(850) 643-2339

libertycountyfl.com

WAKULLA COUNTY

(850) 745-7200

wcso.org/emergency-management

LEON COUNTY

(850) 606-3700

<https://cms.leoncountyfl.gov/Home/County-Administrator/Administration/Assistant-to-the-County-Administrator-for-Community-Relations-and-Resilience/Emergency-Management>

Other Hurricane Preparedness Resources:

The Florida Division of Emergency Management

The National Hurricane Center

Federal Emergency Management Agency (FEMA)

Ready (From the Department of Homeland Security)

American Red Cross

The Salvation Army

floridadisaster.org

nhc.noaa.gov

fema.gov

ready.gov

redcross.org/local/florida/north-florida

salvationarmyflorida.org/tallahassee

Back to SCHOOL

Florida Tax Free Week
July 31 - August 9, 2021

For more information and a list of qualifying items, please review the Florida Department of Revenue's website: <https://floridarevenue.com/>.

Lend a Helping Hand to Hospice Patients!



Volunteering can help strengthen your social connections, enhance your civic engagement, and provide mental health benefits!

Join us for a **Virtual Volunteer Training**
to become a Big Bend Hospice Volunteer

TRAINING SESSIONS ARE AVAILABLE SATURDAY
July 24 | August 28 | September 25
9:00 AM - 4:00 PM via ZOOM

Serving Franklin, Gadsden, Jefferson, Leon, Liberty, Madison, Taylor and Wakulla Counties

For more information, contact Katie Mandell at (850) 933-1878
or visit BIGBENDHOSPICE.ORG/VOLUNTEERS

HELP SAVE A LIFE AND JOIN
TALQUIN AND ONEBLOOD
FOR OUR COMMUNITY

BLOOD DRIVES!

Each successful donor will receive a \$10 eGift card, OneBlood t-shirt, and wellness check-up, including the COVID-19 antibody test, blood pressure, temperature, iron count, pulse, and cholesterol screening!

APPOINTMENTS ARE ENCOURAGED
FOR BLOOD DONATION.

PLEASE VISIT
ONEBLOOD.ORG/DONATE-NOW/
TO SIGN UP!

Quincy

Mon., Aug. 23
11:30 AM - 5:00 PM
1607 W Jefferson Street

Bradfordville

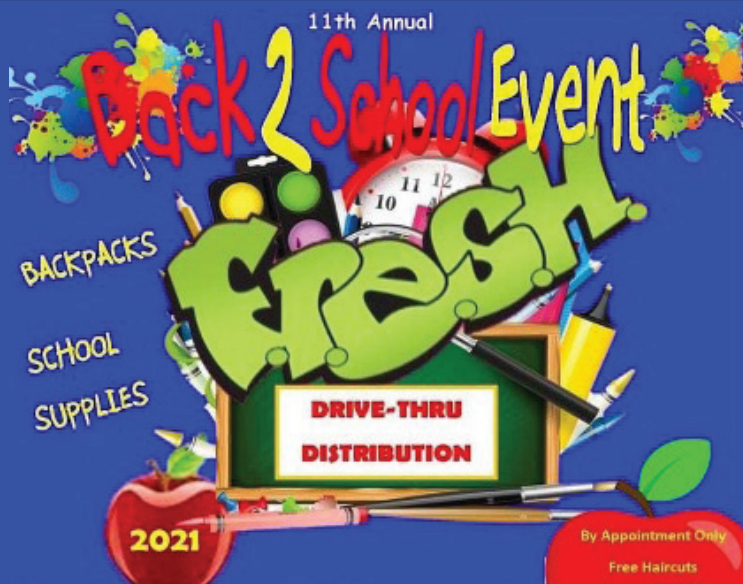
Wed., Aug. 25
11:30 AM - 5:00 PM
6724 Thomasville Road

Lake Jackson

Tues., Aug. 24
11:30 AM - 5:00 PM
4808 Portal Drive

Crawfordville

Thurs., Aug. 26
11:30 AM - 5:00 PM
681 Wakulla-Arran Road



DISTRIBUTION LOCATIONS:
Saturdays, 9:00 am—12:00 Noon

July 17th, Coast Charter School
48 Shell Island Rd, St Marks, FL

July 24th, Panacea Plaza
1353 Coastal Hwy, Panacea, FL

July 31st, Sopchoppy City Hall
105 Municipal Ave, Sopchoppy, FL

August 7th, Wakulla Community Center
318 Shadeville Rd, Crawfordville, FL

2021

By Appointment Only

Free Haircuts

August 7, 2021

Wakulla Community Center

(850) 661-9141

or (850) 926-6020

Free Physicals

Locations will be posted on the
FRESH Back to School
Outreach Event Facebook Page
For appointments
send a private message.



Information call: (850) 545-5982 or (850) 284-9233 or (850) 545-3928



FORT BRADEN Farmers Market



July Market: 7/10

August Market: 8/14

9AM to 12PM

@ Lake Talquin Baptist
Church Lawn

fbcommunity.org @fortbradenfarmersmarket



Saturday, July 31, 2021

Wakulla Community Center * 8am-12pm

or until capacity is met

318 Shadeville Rd., Crawfordville

For Wakulla County Residential Households
and Conditionally Exempt Small Quantity Generators Only

(CESQG's will be charged for disposal and must register by calling 850-926-7616 by July 23)



"No Cost" and "Low Cost" Solar Red Flags



At this time, Talquin is not collaborating or working with any third party "low cost" or "no cost" residential solar programs. Here are some red flags to look for if you come across information advertising deals on solar for Talquin Members:

- ▶ If any party other than Talquin through its official social media pages, website, etc. posted the information, we have not approved the information being shared.
- ▶ Look out for phrases such as "low cost" and "no cost," and posts offering free money in exchange for enrolling in a program.
- ▶ If it sounds or feels too good to be true, it probably is. Trust your gut.

If you have any questions or concerns, please call Dan Ard at 850-627-7651, ext. 1412.

Happy Retirement David!

After 31 years of outstanding service, David Kennedy is saying farewell to Talquin. David started his Talquin career in 1990 as a Communications Technician and was promoted to Communications Coordinator in 2000. David's dedication to his job and Talquin Members has led to numerous communications improvements throughout the Cooperative over the past 31 years. David's can-do attitude was on display every day at the Cooperative, and his fellow employees will definitely miss him.

Career well done! Good luck in retirement David.



Apprentice Graduation

Congratulations to our graduate, Charles Mathis, on completing the Lineman Apprenticeship Program!



Powering Up After an Outage

When the power goes out, we expect it to be restored within a few hours. But when a major storm or natural disaster causes widespread damage, extended outages may result. Our line crews work long, hard hours to restore service safely to the greatest number of Members in the shortest time possible. Here's what's going on if you find yourself in the dark:



AMERICA'S ELECTRIC
COOPERATIVES

1. High-Voltage Transmission Lines:

Transmission towers and cables that supply power to transmission substations (and thousands of Members) rarely fail. But when damaged, these facilities must be repaired before other parts of the system can operate.

2. Distribution Substation:

A substation can serve hundreds or thousands of Members. When a major outage occurs, line crews inspect substations to determine if problems stem from transmission lines feeding into the substation, the substation itself or if problems exist further down the line.

3. Main Distribution Lines:

If the problem cannot be isolated at a distribution substation, distribution lines are checked. These lines carry power to large groups of consumers in communities or housing developments.

4. Tap Lines:

If local outages persist, supply lines (also known as tap lines) are inspected. These lines deliver power to transformers, either mounted on poles or placed on pads for underground service, outside businesses, schools and homes.

5. Individual Homes:

If your home remains without power, the service line between a transformer and your residence may need to be repaired. Always call to report an outage to help line crews isolate a local issue.

TALQUIN ELECTRIC COOPERATIVE, INC.

Office Locations

Headquarters

1640 W. Jefferson Street
Quincy, Florida 32351
(850) 627-7651

Quincy Member Service Office

1607 W. Jefferson Street
Quincy, Florida 32351
(850) 627-9666

Wakulla Member Service Office

681 Wakulla Arran Road
Crawfordville, Florida 32327
(850) 926-7422

Hosford Member Service Office

20557 NE Cooperative Way
Hosford, Florida 32334
(850) 379-8679

Lake Jackson Member Service Office

4808 Portal Drive
Tallahassee, Florida 32303
(850) 562-0125

Bradfordville Member Service Office

6724 Thomasville Road
Tallahassee, Florida 32312
(850) 893-6853

Office Hours

Monday - Friday

8:00 AM - 5:00 PM,

Closed for Lunch 1:00 PM - 2:00 PM

Service Interruptions (Outages) Should Be Reported To

1-888-802-1832
(live operator)

1-866-899-4832
(automated systems)

Visit us and report and view
outages on the Web at
www.talquinelectric.com

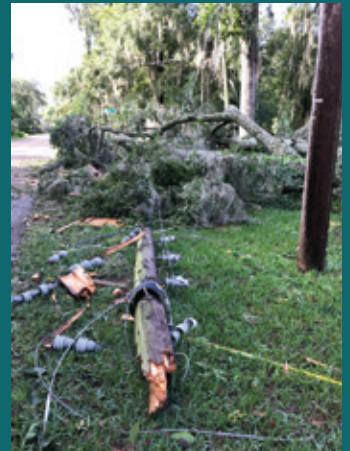
Sign up for text outage notification at
www.talquinelectric.com to report your
outage quickly and to receive
outage information.



Stay Safe - Do Not Go Near Downed Lines

Always avoid downed power lines—the wire could be energized, which could be deadly for those nearby. Quickly report downed lines to Talquin.

Report downed lines by calling:
1-888-802-1832 (Live Operator) or 911
850-627-7651 (during business hours)



Holiday Office Closures

Talquin offices will be closed
on Monday, September 6, in
observance of Labor Day.

We will reopen on Tuesday,
September 7.

WPCA Adjustment

Effective July 1, 2021, Talquin
will reduce the Wholesale
Power Cost Adjustment from
a credit of (\$.0105) to a credit
of (\$.0115), resulting in an
overall decrease on bills of 1
mill, or \$1.00 per 1,000 kWh.

Let's Stay Connected this Hurricane Season!



Mobile App:

Talquin Electric Cooperative, Inc.



Text Message:

Text #Outage to 85700
(must register on Talquin's website
for this service)



Email:

memberfeedback@talquinelectric.com



Website:

www.TalquinElectric.com



Drive Thru:

All Talquin offices are operating
from the drive thru only



Mail:

P.O. Box 1679, Quincy, FL 32353



Phone:

(850) 627-7651



Social Media:

Search "Talquin Electric Cooperative"
on Facebook, Instagram, and Twitter.