

THE CURRENT

June 2017



TALQUIN
ELECTRIC COOPERATIVE, INC.
WATER & WASTEWATER, INC.

"The Current"**June 2017 Vol. MMXVII No. 6****USPS #356-710**

"The Current" is the official newsletter of Talquin Electric Cooperative, Inc., published monthly as an informational and educational service to the members of the Cooperative. Periodical postage paid at Tallahassee, Florida.

SUBSCRIPTION RATE

Cooperative Member \$1.50 per year.
Talquin Electric Cooperative, Inc. is an equal opportunity provider and employer.

EDITORIAL OFFICES

P.O. Box 1679
1640 West Jefferson Street
Quincy, Florida 32353-1679

Tracy Bensley, General Manager
Colleen Stanley, Director of Administrative Services/Editor

PRINTED BY:

Graphic Press Corporation, Tallahassee, Florida

POSTMASTER

In using Form 3579 please give key letter and mail to "The Current,"
P.O. Box 1679, Quincy, Florida 32353-1679

OFFICERS

Carrie L. Durden
President
Home 850-539-9751
P.O. Box 541
Havana, Florida 32333

William R. VanLandingham
Vice President
Cell 850-545-5604 or Home 850-442-6252
519 Telogia Creek Road
Quincy, Florida 32351

Joseph Alexander
Secretary/Treasurer
Home 850-627-2704
507 Deerwood Circle
Quincy, Florida 32352

TRUSTEES

Dr. Clifford S. Bristol
Home 850-643-5350
15333 N.W. CR 12
Bristol, Florida 32321

Doug Bruce
Cell 850-321-7674
P.O. Box 10855
Tallahassee, Florida 32302

Sam Fenn
Home 850-576-5072
3539 Lakeview Drive
Tallahassee, Florida 32310

David Miller
Home 850-926-5869 or Cell 850-567-5405
227 Buck Miller Road
Crawfordville, Florida 32327

Carla Pararo
Home 850-688-6809
1050 Winfield Forest Dr
Tallahassee, FL 32317

Dr. David L. Wright
Home 850-875-2928
1194 Solomon Dairy Road
Quincy, FL 32352

The TECI and TWWI Board regularly schedule their workshops on the 1st Monday of each month and meetings on the 3rd Wednesday of each month at the Headquarters' Office in Quincy, FL at 6:30 p.m.

Notice of any changes will be listed on the website.

What are Capital Credits?

At Talquin Electric Cooperative, you are more than just a customer. You are a Member – part-owner of your local electric cooperative. Everything owned by the Cooperative is held for all of its Members. As part of that relationship, you contribute money to the Cooperative, which is called **patronage capital**. Patronage capital is the difference in the amount of money Talquin takes in each year less operating and maintenance expenses.



Carrie Durden
Board President



Tracy Bensley
General Manager

Each year, Members receive credit for their capital contributions based on the amount of money they paid into the Cooperative. This credit is allocated and maintained in each Member's capital credit account. These contributions are simply called capital credits. Capital credits have been allocated to Talquin Members since 1949.

Patronage capital is put to work within the Cooperative. This capital allows Talquin to finance operations, power restoration after outages, and construction. These contributions minimize the amount of money Talquin has to borrow. By limiting borrowing, the Cooperative is able to keep rates affordable. This money is returned in later years on a regular and sound business basis.

As a Member-owned cooperative, Talquin operates as a not-for-profit utility. Talquin maintains a not-for-profit status through the return of capital credits to Members. The process of returning these allocated funds to the Cooperative's Members is called "retiring capital credits". Members periodically receive money back in the form of capital credit retirements. The return of capital credits is the real demonstration of the Members' ownership in Talquin Electric Cooperative.

Capital credits were returned to more than 34,000 Members totaling over \$3,800,000 in December 2016. In fact, your Cooperative has returned more than \$75,000,000 in capital credits to Members throughout the years.

Talquin and electric cooperatives around the nation have had the same mission since their creation: to bring safe, affordable, and reliable power to Members. That is the Cooperative Difference, and capital credits help Talquin achieve this mission!

Capital Credits – Frequently Asked Questions

Over the next few months, short articles will be provided in The Current regarding capital credits. These articles are intended to help educate Talquin members and answer questions Members may have about the unique electric cooperative capital credit system. If you have a particular question regarding capital credits, please contact Talquin's Capital Credit Clerk at 850-627-7651, email MemberFeedback@talquinelectric.com, or visit www.talquinelectric.com. You may also refer to Article II of the Cooperative's By-laws. Copies of the By-laws can be found on the Cooperative website or obtained from any Member Service office.



Potential Hazards of Electric Generators

Electric generators can keep your lights and appliances running during power outages — but they can also pose serious safety hazards if operated incorrectly. To ensure the safety of your family, neighbors and Talquin Electric Cooperative employees, please read and follow the safety, maintenance and testing instructions in the generator's operating manual.

Use heavy-duty extension cords from the generator. Overloaded cords can cause fires or equipment damage. Don't use extension cords with exposed wires or worn shielding. Make sure the cords from the generator don't present a tripping hazard. Don't run cords under rugs where heat might build up or cord damage may go unnoticed.

Never run an electric generator inside a building. Always ensure proper ventilation and airflow around the generator.

Never add fuel to a generator while it's running. Avoid spilling fuel on hot components. Put out all flames or cigarettes when handling gasoline.

Always have a fully charged, approved fire extinguisher located near the generator.

Don't overload the generator. It should be used only when necessary, and only to power essential equipment.

Keep children away from generators at all times.

Plug appliances directly into the generator itself. Connecting the generator directly to your home's circuits or wiring must be performed by a qualified, licensed electrician who will install a transfer switch that will keep the generator from feeding power back into the distribution lines. If that happens, the power crews working to restore your electric service could be put at risk. Also, if your generator is still hooked up when the power is restored, your generator and your household electrical system may be damaged as well.

If you are interested in a Gener-Link transfer switch, contact a Member Services Office to arrange purchase and installation of a unit for your home.

TEC Outage Updates

During a storm, make sure to follow us and stay updated on current outage information.



www.talquinelectric.com/category/outages



@TalquinElectricCoop



@TECtwwi

County Emergency Contacts

If you have special needs (due to age, disability, etc.) and may require assistance during a storm, or if you need shelter updates, contact your local County Emergency Management for information regarding services they provide.

Gadsden County

(850) 875-8642

www.gadsdensheriff.org/emergency_mgmt.html

Leon County

(850) 606-3700

www.leoncountysoc.com/emergency-management

Liberty County

(850) 643-2339

www.libertycountyflem.com

Wakulla County

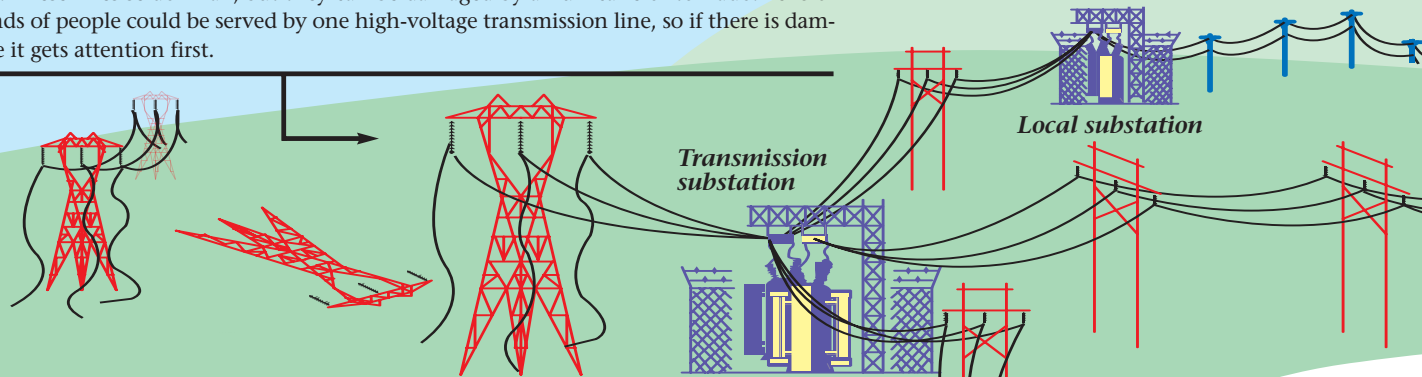
(850) 745-7200

www.wcso.org/emergency-management

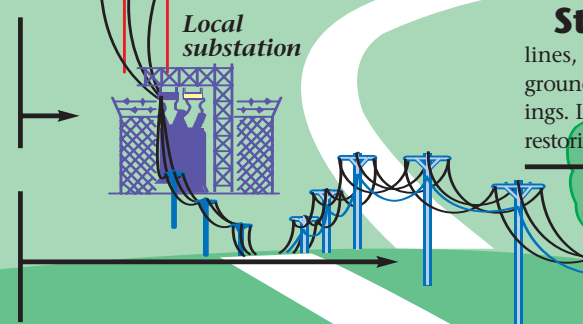
After a major power outage

The steps to restoring power

Step 1. Transmission towers and lines supply power to one or more transmission substations. These lines seldom fail, but they can be damaged by a hurricane or tornado. Tens of thousands of people could be served by one high-voltage transmission line, so if there is damage here it gets attention first.



Step 2. A co-op may have several local distribution substations, each serving thousands of consumers. When a major outage occurs, the local distribution substations are checked first. A problem here could be caused by failure in the transmission system supplying the substation. If the problem can be corrected at the substation level, power may be restored to a large number of people.



Step 3. Main distribution supply lines are checked next if the problem cannot be isolated at the substation. These supply lines carry electricity away from the substation to a group of consumers, such as a town or housing development. When power is restored at this stage, all consumers served by this supply line could see the lights come on, as long as there is no problem farther down the line.

Hurricanes and ice storms. Tornadoes and blizzards. Electric cooperative members have seen them all. And with such severe weather comes power outages. Restoring power after a major outage is a big job that involves much more than simply throwing a switch or removing a tree from a line.

The main goal is to restore power safely to the greatest number of members in the shortest time possible.

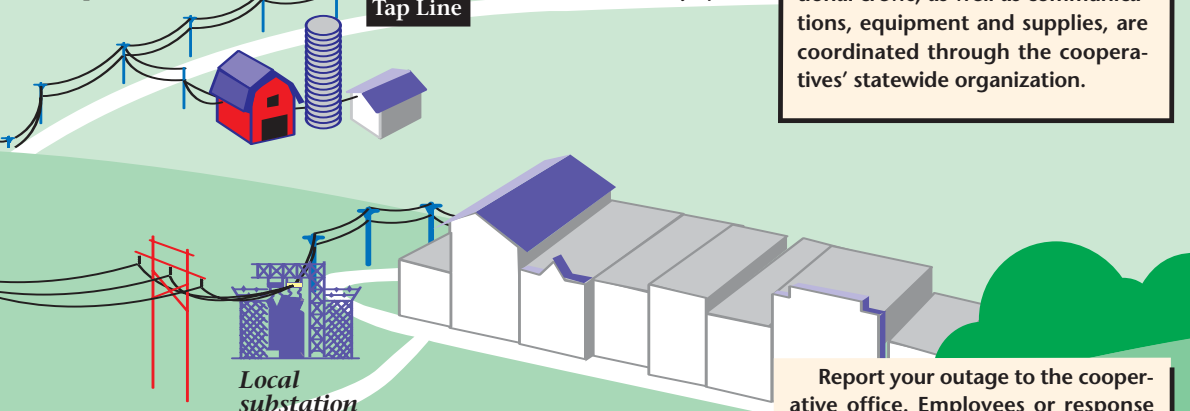
The major cause of outages is damage caused by fallen trees. That's why your electric cooperative has an ongoing right-of-way maintenance program.

This illustration explains how power typically is restored after a major disaster.

Reprinted from *Carolina Country*, the monthly magazine for North Carolina

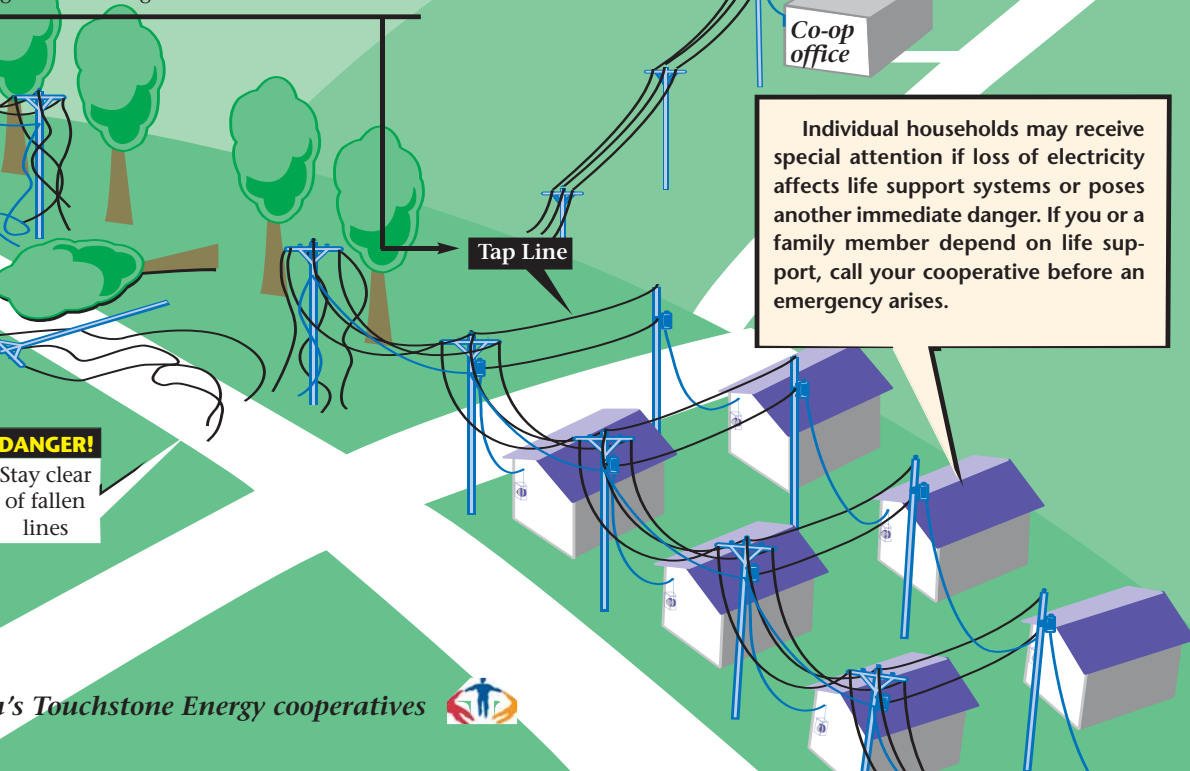
Area enlarged: Consumers themselves (the co-op) are responsible for damage to service installation on the building. Your electrician can't fix anything beyond this point. Licensed electrician.

Step 5. Sometimes, damage will occur on the service line between your house and the transformer on the nearby pole. This can explain why you have an outage when your neighbor does. Your co-op needs to know about an outage here, so a service crew can repair it.



During a major outage, other cooperatives send line crews to assist with restoring power. These additional crews, as well as communications, equipment and supplies, are coordinated through the cooperatives' statewide organization.

Step 4. The final supply lines, called tap lines, carry power to the utility poles or underground transformers outside houses or other buildings. Crews fix the remaining outages based on the location of the outage to bring service to the greatest number of consumers.



Report your outage to the cooperative office. Employees or response services use every available phone line to receive your outage reports. Remember that a major outage can affect thousands of other members. Your cooperative appreciates your patience.

Individual households may receive special attention if loss of electricity affects life support systems or poses another immediate danger. If you or a family member depend on life support, call your cooperative before an emergency arises.

DANGER! Stay clear of fallen lines

Member's Touchstone Energy cooperatives



Checking Breakers



During a power outage, do not forget to check your breakers. Remember, some locations have an outside breaker box near the meter. When breakers trip, they are usually in the middle position, so you will need to reset it by flipping it off and then flipping it back on.

Flood Hazards



Heavy rains often cause flooding in lowland areas, homes, and basements. Be alert to electrical equipment that could be energized and in contact with water, along with other potential hazards that can create a serious danger of electrocution.

During a storm, drive only if necessary and avoid flooded roads. You won't know the depth of the water or the condition of the road underneath. Turn Around, Don't Drown.

trading post

Miscellaneous

Housecleaning: free quotes, reasonable rate, excellent references. 18 years experience, move ins and move outs. 321-4181

Gas Dryer- Maytag gas dryer converted to propane. Asking \$200 OBO. 294-9757

MISC ITEMS: Furniture sale 2 bedroom, Dark \$600 or Lite \$400; loveseat \$50; computer desk \$50; womens size 14,16; VHS movies, christmas decorations, printers, computer cords and accessories \$60 other stuff 627-3038

Diamond Compound Bow, 24" draw, Tru-Fire trigger, 10 arrows, Plano case. \$300 Call or text 491-0755

MISC ITEMS: Bathroom vanity w/sink, lights, mirror, medicine cabinet, shower heads, \$15-\$80; Golf cart bag w/ umbrella holder \$179 BagBoy brand, unique, one-step fold, never used! Daybed with beautiful ceramic rails \$99; GE range hood, clean, good cond \$75. 422-1368

Precious Little Golden Books – read to your little on sweet stories of long ago – preserve our heritage. Some books really old. If interested, 933-9776 & leave message.

Liquidating doll collection, including doll furniture, doll outfits. 878-8321

Yamaha Keyboard. PSRE443-61. Adjustable stand. AC Power adaptor. Excellent condition. \$175 OBO 212-0719

Special Price Memory Garden's plot \$750. Up front very nice location. 68-D #. 879-2932

3 piece indoor, natural wicker table, 35" square glass top, 2 chairs with rollers, \$29. 212-2945

Automotive

2017 20" Goodyear Wrangler tires- 4 tires for \$500 275/60R20 In excellent condition! 408-4623

1999 Chevy Blazer for parts, new tires - \$700. 575-7788

2000 Coachman Clipper slide out camper, remodeled inside, air cond, awning, \$3200 OBO. 510-9334 or 510-8095

Real Estate

Riverfront property 3BD/1BA well insulated house with large separate workshop/BA, fenced backyard, high bluff, City of Sopchoppy, by owner, \$186,500. 562-8547

Maine - Almost 400 acres next to Williams Pond Eco solar powered bed and breakfast near Bucksport Maine off road to Acadia National Park. Just has forest roads and beautiful lake with stream. Rent \$500/month 894-6992

3/2, 1600sf adorable N.C. mountain cottage. Year 'round mountain and seasonal views of Lake Chatuge. Central HVAC/hardwood floors. \$125,000. 445-3881

Professional Commercial office space for rent, wheelchair accessible, great location and parking, 720 sq ft, \$750/month. 219-9777

9.5+/- acres located on Freeman Rd in Bristol, FL. Asking \$100,000. Call/text 556-3800

Waterfront 3/2 extensive remodel, 1887 sq ft on .63 acre lot in Killearn Lakes Plantation 3349 Barrow Hill Trl. 813-505-7089

Farm/Garden

Raw Wildflower Honey For Sale. \$5 half pint, \$10 pint, \$20 quart. 926-2658

Trading Post Guidelines

In order to continue to provide The Trading Post in every issue of *The Current*, we ask Members to adhere to the guidelines listed below when submitting an ad. If an ad does not meet the criteria, it will not be published. There is no cost to place an ad in The Trading Post.

- Members may submit one ad every three months (four times a year)
- Ads must be twenty-five words or less
- Must be typed or printed legibly in ink
- No registered businesses may run an ad
- No changes after ad submission
- Deadlines are the first day of the month preceding the month of publication (For example, December 1st is the deadline for the January edition.)
- Members must provide name, phone number, and account number.

Mail ads to: "The Current", Talquin Electric Cooperative P.O. Box 1679, Quincy, FL 32353-1679 or e-mail to: tradingpost@talquinelectric.com

Free Range Yard Eggs. Brown, white, beige. \$2 with exchange carton, \$2.50 without carton, just outside Capital Circle NW. leave detailed message. 566-4974

Snapper rear engine rider, 28" cut, \$300 – Cash. 539-5641

Fresh Brown Eggs! \$3/dozen or \$4.50/18; Eggs washed and brought daily, convenient location! 21 E Jefferson St. Quincy, FL. Call/text 879-2375

Marine

Vintage Montgomery Ward 7.5 HP **Sea King out-board motor** \$85. 459-2203

1994 Lowe OMC, 17 ft bass boat. 70 hp Johnson, 2 live wells trolling motor ect, had the entire boat serviced recently; new starter plate, brain box, fuel lines, batteries and lots more. Everything works. Clear title. \$4,750 OBO. 545-7098

Wanted

Seamstress with sewing machine that can handle a quilt for help with a repair project. Please contact gailcrisp@mchsi.com or call cell 544-9385

FREE

Used truck topper, approx. 75" x 65", fits Chev S-10 or similar size truck. 508-3550

Pecan wood (you cut - you haul) - Two large trees were cut. 856-5894 or howellbunch@tds.net

Car cover, worn but useable; **1986 calendar coffee cup,** numerous **plastic planters** in various sizes. 562-2086

Recipes

June 1st marked the beginning of hurricane season. The trick for Floridians is planning ahead. Now is the time to gather what you need in your pantry to get you prepared if we get a named storm. Try out dishes ahead of time and see what works for you. It's helpful to have a headlamp so you can see what you're doing if cooking when the power is out. Here are a couple of no-cook recipes to get you started!

Banana Crunch Wrap

Use tortilla wraps, spread a bit of crunchy peanut butter, add banana chips, drizzle on some honey and roll it up. Try experimenting by adding oats or whole wheat Cheerios for more crunch and protein. A few shreds of coconut

give it a tropical taste, and cranberries add a little tang and vitamin C.

Tuna, White Bean, and Red Onion Salad

4 cups cooked white beans (see Cannelini Beans with Garlic and Sage), drained, chilled

1 ½ 6-ounce cans tuna packed in olive oil, drained, broken into chunks

1 small red onion, very thinly sliced (about 1 ½ cups)

¼ cup extra-virgin olive oil

Place beans in large bowl. Add tuna and onion; drizzle with oil. Toss gently to combine. Season with salt and generous amount of freshly ground black pepper.

Watts Happening

Leon County Senior Outreach:
Explore “Lunch and Learn” to stay connected

No reservations needed to join the fun. Each event is from 10:30 am – 12:30 pm. Featuring a delicious catered lunch for \$6 per plate. Call 891-4065 for more information.

June 20 Fort Braden Community Center

June 27 Chaires/Dorothy C. Spence Community Center

No Lunch and Learns in July

Tallahassee Senior Center – LifeLong Learning: If you like to explore new things, check out Tallahassee Senior Center’s LifeLong Learning classes that cover an array of subjects. **Cost and locations vary.** To register and/or find more information – contact Maureen Haberfeld at 850-891-4033.

June 16 (9:30 am – 1 pm) – Tour of the Grove Museum: Enjoy a guided tour of the house and picnic lunch on the grounds

June 19, 26 (10 am – 11:30 am) – Telling My Stories: Local author, Kermit Brown guides the class on how to write stories of their lives

June 21 (10 am – 11:30 am) – Finding Your Roots: Researching your family history using resources of the State Library and Archives of Florida

University of Florida/IFAS presents Art, Garden and Farm Family Festival: Discover creative ways to explore visual art and the art of gardening through demonstrations and fun activities for the whole family. Take a trolley tour, speak with experts, arts and crafts, and more! **FREE and open to the public.**

Saturday, October 7 (9 am – 2 pm)
North Florida Research and Education Center (NFREC)
155 Research Rd, Quincy FL

Talk with Talquin: Join us for some face-to-face discussions between our Members and TEC staff in a casual and relaxed atmosphere. Hear from industry experts possessing many years of experience in utility and the cooperative business model and receive favorable solutions. Come and enter to win a \$50 gift card!

• **Thursday, July 6** (11 am - noon)
Red Eye Coffee
3431 Bannerman Rd. #101 - Tallahassee

• **Thursday, July 13** (noon - 1 pm)
Gadsden County Public Library
732 S. Pat Thomas Pkwy - Quincy

Sopchoppy 4th of July Celebration: Another of Wakulla County's oldest traditions is the Sopchoppy 4th of July Celebration in the heart of downtown Sopchoppy. The festivities begin in the morning with a parade, followed by an all-day and all-night festival. Complete with arts and crafts and food vendors on the banks of the Sopchoppy River. The evening is then capped with a spectacular fireworks display that will illuminate the sky over the picturesque waterfront.

Tuesday, July 4 (9 am - until Fireworks)
Myron B. Hodge City Park - Sopchoppy



Stay Safe – Do Not Go Near Downed Lines

Always avoid downed power lines – the wire could be live, which could be deadly for those nearby. Quickly report downed lines to your local electric cooperative.

Report downed lines by calling:
1-866-899-4832 (Automated System)
1-888-802-1832 (Live Operator) or 911



"THE CURRENT"
 TALQUIN ELECTRIC COOPERATIVE, INC.
 P.O. BOX 1679
 QUINCY, FL 32353-1679

PERIODICAL

TALQUIN ELECTRIC COOPERATIVE, INC.
Office Locations

Headquarters

1640 W. Jefferson Street
 Quincy, Florida 32351
 (850) 627-7651

Quincy Member Services Office

1607 W. Jefferson Street
 Quincy, Florida 32351
 (850) 627-9666

Wakulla Member Services Office

681 Wakulla Arran Rd.
 Crawfordville, Florida 32327
 (850) 926-7422

Hosford Member Services Office

20557 NE Cooperative Way
 Hosford, Florida 32334
 (850) 379-8679

Lake Jackson Member Services Office

4808 Portal Drive
 Tallahassee, Florida 32303
 (850) 562-0125

Bradfordville

Member Services Office
 6724 Thomasville Road
 Tallahassee, Florida 32312
 (850) 893-6853

**Service Interruptions (Outages)
 Should Be Reported To**

1-888-802-1832
 (live operator)

1-866-899-4832
 (automated systems)

Visit us and report and view
 outages on the Web at
www.talquinelectric.com

Sign up for text outage notification
 at www.talquinelectric.com to
 report your outage quickly and to
 receive outage information.

Shining Star- David Sailor

Talquin Electric would like to spotlight 2016 Youth Tour Alumni, David Sailor. David was East Gadsden High School's Class of 2017 Salutatorian. He was the President of the EGHS Beta Club, a member of the National Honor Society, Key Club, and an active participant in the FSU Upward Bound program, and recipient of the Quincy Kiwanis Club scholarship. He joined TCC and FAMU's dual enrollment program to get a head start in college. When David graduated last month, he had 24 college credit hours and will obtain an Agricultural Biotechnology Certification. He plans to attend Florida Agricultural and Mechanical University, where he will major in electrical engineering. David plans on pursuing a career in electrical engineering because he has a passion for innovation and technological advancements. David also wants to devote his life to philanthropy and charity. He will strive to help build underdeveloped communities like Gadsden County, and motivate others to reach their full potential in everything they do. David's personal motto is, "Always shoot



for the stars because you may just land on the moon!" We are honored to name David Sailor our shining star and can't wait to see what the future has in store for him. Congratulations, David! We are so proud of you!



In order to ensure that Talquin knows when your power is out, **ALWAYS** contact us in one of the following ways if you experience an outage:

Website
www.talquinelectric.com

Phone
 Automated System: 1-866-899-4832
 Life Operator: 1-888-802-1832

Text Message

Register to report your outage via text on our website.
 Text #outage to 85700 to report outages once you are registered
 and receive updates when power is restored.



#TECares #MyTalquin #CoopNation #MyCoop